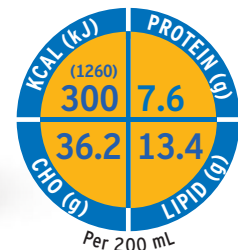




**FRESENIUS  
KABI**

caring for life



# Frebini Energy Fibre DRINK

The adapted solution for small patients

1.5 kcal/mL oral nutritional supplement for the dietary management of paediatric patients (1 - 12 years) with increased energy needs and conditions such as failure to thrive, neurological impairment, physical disablement, trauma/surgery, gastro intestinal disorders and chronic wasting diseases

With all micro- and macronutrients for complete nutrition adapted to paediatric patient needs

With high quality complete milk protein for a balanced amino acid provision and catch up growth and/or disease specific higher demands

Adapted fat profile with 8% Energy MCT for easy absorption

With balanced multi-fibre to maintain gut physiology<sup>1</sup>

For Health Care Professionals only.

# Frebini

## Energy Fibre DRINK

Available in two delicious flavours  
in 200 mL EasyBottle

### Nutritional Information

Average content		Frebini Energy Fibre DRINK	
		100 mL	bottle = 200 mL
Energy value	kJ (kcal)	630 (150)	1260 (300)
Fat (40% Energy)	g	6.7	13.4
of which SFA*	g	0.4 <sup>a</sup> /0.5 <sup>b</sup>	0.8 <sup>a</sup> /1.0 <sup>b</sup>
of which MCT	g	1.3	2.6
of which MUFA**	g	3.3 <sup>a</sup> /3.2 <sup>b</sup>	6.6 <sup>a</sup> /6.4 <sup>b</sup>
of which PUFA***	g	1.7 <sup>a</sup> /1.6 <sup>b</sup>	3.4 <sup>a</sup> /3.2 <sup>b</sup>
Carbohydrate (48.3% Energy)	g	18.1	36.2
of which sugars	g	4.5 <sup>a</sup> /4.9 <sup>b</sup>	9.0 <sup>a</sup> /9.8 <sup>b</sup>
of which lactose	g	≤ 0.05	≤ 0.1
Fibre (1.5% Energy)	g	1.1	2.2
Protein (10.2% Energy)	g	3.8	7.6
Water	mL	79	158
Gluten Content	ppm	≤ 5	
Osmolarity	mosmol/L	400 <sup>a</sup> /420 <sup>b</sup>	
Osmolality	mosmol/kg H <sub>2</sub> O	500 <sup>a</sup> /530 <sup>b</sup>	
Minerals and trace elements			
Sodium	mg	81 <sup>a</sup> /102 <sup>b</sup>	162 <sup>a</sup> /204 <sup>b</sup>
Potassium	mg	150	300
Chloride	mg	123 <sup>a</sup> /110 <sup>b</sup>	246 <sup>a</sup> /220 <sup>b</sup>
Calcium	mg	105 <sup>a</sup> /98 <sup>b</sup>	210 <sup>a</sup> /196 <sup>b</sup>
Magnesium	mg	19 <sup>a</sup> /20 <sup>b</sup>	38 <sup>a</sup> /40 <sup>b</sup>
Phosphorus	mg	92 <sup>a</sup> /97 <sup>b</sup>	184 <sup>a</sup> /194 <sup>b</sup>
Iron	mg	1.5	3.0
Zinc	mg	1.5	3.0
Copper	µg	150	300
Manganese	mg	0.18	0.36
Iodine	µg	15	30
Fluoride	mg	0.12	0.24
Chromium	µg	6.0 <sup>a</sup> /9.0 <sup>b</sup>	12 <sup>a</sup> /18 <sup>b</sup>
Molybdenum	µg	6.0	12
Selenium	µg	4.5	9.0
Vitamins and other nutrients <sup>+</sup>			
Vitamin A	µg RE <sup>o</sup>	68	136
β-Carotene	µg	150	300
Vitamin D <sub>3</sub>	µg	1.13	2.26
Vitamin E	mg α-TE <sup>oo</sup>	3.0	6.0
Vitamin K <sub>1</sub>	µg	6.0	12
Vitamin B <sub>1</sub>	mg	0.3	0.6
Vitamin B <sub>2</sub>	mg	0.3	0.6
Niacin	mg NE <sup>ooo</sup>	1.8	3.6
Vitamin B <sub>6</sub>	mg	0.17	0.34
Vitamin B <sub>12</sub>	µg	0.3	0.6
Pantothenic acid	mg	0.6	1.2
Biotin	µg	7.5	15
Folic acid	µg	33	66
Vitamin C	mg	12	24
Choline <sup>+</sup>	mg	30	60
Taurine <sup>+</sup>	mg	12	24
Carnitine <sup>+</sup>	mg	4.5	9.0
Mvo-inositol <sup>+</sup>	mg	22.5	45

Clinically free from purine and cholesterol. Low in sodium.

a) Vanilla b) Chocolate

\*SFA = saturated fatty acids, \*\*MUFA = monounsaturated fatty acids,

\*\*\*PUFA = polyunsaturated fatty acids;

<sup>o</sup>RE: retinol equivalents; <sup>oo</sup>α-TE: alpha-tocopherol equivalents;

<sup>ooo</sup>NE: niacin equivalents



### Prescribing information

#### Food for special medical purposes:

Nutritionally complete, high-caloric (1.5 kcal/mL) oral nutritional supplement with fibre. With taurine, carnitine and inositol. Low in lactose and gluten. For the dietary management of children (1–12 years) with or at risk of malnutrition, in particular with increased energy needs.

#### Dosage:

Must be determined by the health care professional according to patients' needs. Recommendation for supplementary nutrition: 1–3 bottles/day or complete nutrition: age/dosage (bottles/day): 1–3 years/3–5, 4–6 years/5–6, 7–10 years/6–7, 11–12 years/7–8.

#### Important notes:

To be used under medical supervision. Suitable as sole source of nutrition. Not suitable for infants < 1 year or adults. Not suitable for patients with galactosaemia. Ensure adequate fluid intake. Packaged in a protective atmosphere. **Not for parenteral (I.V.) use!**

#### Instruction for use:

Store at room temperature. Opened bottles may be stored in a refrigerator for up to 24 hours. Shake well before use. Drink slowly! Best served chilled.

#### Contraindications:

Not suitable whenever enteral nutrition is not permitted such as in acute gastrointestinal bleeding, ileus and shock. Use with caution in severe organ failure with impaired metabolism and severe forms of malabsorption. Not suitable for patients with galactosaemia. Not suitable for patients with congenital inability to metabolise nutrients contained in Frebini Energy Fibre DRINK.

### Ingredients

**Frebini Energy Fibre Chocolate flavour:** Water, maltodextrin, rapeseed oil, milk protein, sucrose, medium chain triglycerides (MCT), chocolate powder (sugar, cocoa mass, fat reduced cocoa powder, emulsifier soya lecithin, natural vanilla), fat reduced cocoa powder, inulin (from chicory), emulsifiers (E 471, soya lecithin), cellulose, dipotassium hydrogen phosphate, sodium chloride, wheat dextrin, sodium citrate, choline hydrogen tartrate, acidity regulator (E 524), vit. C, potassium chloride, myo-inositol, taurine, magnesium oxide, flavouring, zinc sulphate, iron sulphate, L-carnitine, niacin, vit. E, pantothenic acid, vit. B<sub>2</sub>, vit. B<sub>1</sub>, manganese chloride, vit. B<sub>6</sub>, sodium fluoride, copper sulphate, β-carotene, vit. A, folic acid, biotin, potassium iodide, sodium selenite, sodium molybdate, chromium chloride, vit. K<sub>1</sub>, vit. D<sub>3</sub>, vit. B<sub>12</sub>.

**Allergen Information: This product contains milk, wheat and soy.**

**Frebini Energy Fibre Vanilla flavour:** Water, maltodextrin, rapeseed oil, milk protein, sucrose, medium chain triglycerides (MCT), inulin (from chicory), cellulose, emulsifiers (E 471, soya lecithin), dipotassium hydrogen phosphate, potassium chloride, sodium citrate, flavouring, sodium chloride, wheat dextrin, choline hydrogen tartrate, vit. C, magnesium oxide, myo-inositol, taurine, acidity regulator (E 524), iron sulphate, zinc sulphate, L-carnitine, niacin, vit. E, pantothenic acid, manganese chloride, vit. B<sub>2</sub>, vit. B<sub>1</sub>, copper sulphate, vit. B<sub>6</sub>, sodium fluoride, β-carotene, vit. A, folic acid, chromium chloride, sodium molybdate, biotin, sodium selenite, potassium iodide, vit. K<sub>1</sub>, vit. D<sub>3</sub>, vit. B<sub>12</sub>.

**Allergen Information: This product contains milk, wheat and soy.**

### Flavours

**Frebini Energy Fibre:** Chocolate, Vanilla

### References

- Lochs H, Allison SP, Meier R, Pirlich M, Kondrup J, Schneider S, et al. Introductory to the ESPEN Guidelines on Enteral Nutrition: terminology, definitions and general topics. Clin Nutr 2006;25:180–6.



**FRESENIUS  
KABI**

caring for life

Fresenius Kabi Australia Pty Limited  
Level 2, 2 Woodland Way,  
Mount Kuring-gai NSW 2080  
Phone 1300 732 001  
Fax 1300 304 384  
www.fresenius-kabi.com.au

Fresenius Kabi New Zealand Limited  
60 Pavilion Drive, Māngere  
Auckland 2022 New Zealand  
Phone 0800 144 892  
Fax +64 9925 2721  
PM2020.766V2 Pub: June 2020